

Beautiful in white

Westlife

Measures 1-4 of the piano introduction. The music is in 4/4 time. The right hand plays a simple melody of half notes, while the left hand plays a more complex eighth-note accompaniment. The first two measures of the left hand are marked with a repeat sign and the word *Simile*.

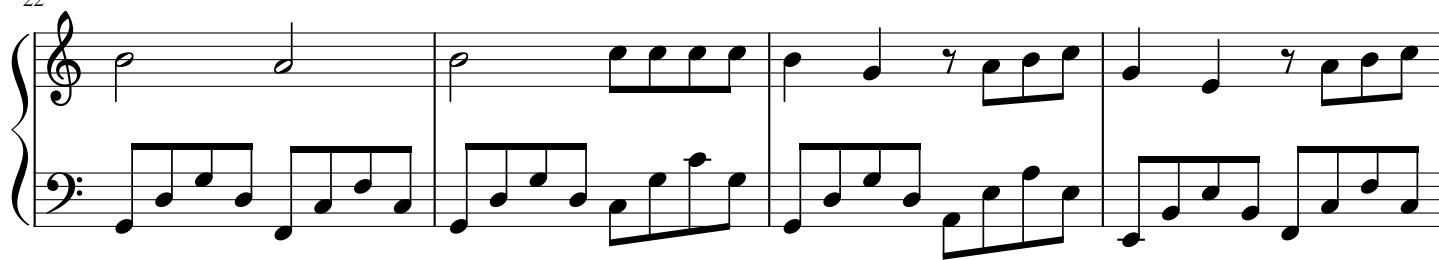
Measures 5-8 of the piano introduction. The right hand continues the melody, and the left hand maintains the eighth-note accompaniment. Measure 5 is marked with a '5' at the beginning of the staff.

Measures 9-12 of the piano introduction. The right hand continues the melody, and the left hand maintains the eighth-note accompaniment. Measure 9 is marked with a '9' at the beginning of the staff.

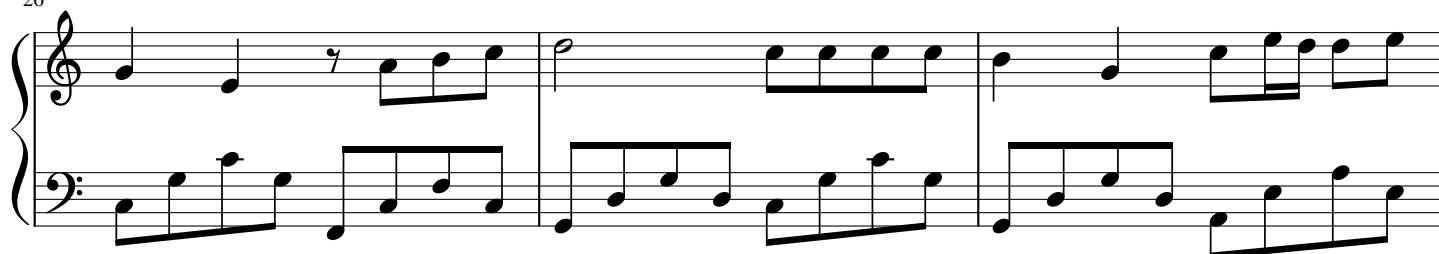
Measures 13-16 of the piano introduction. The right hand continues the melody, and the left hand maintains the eighth-note accompaniment. Measure 13 is marked with a '13' at the beginning of the staff.

Measures 17-20 of the piano introduction. The right hand continues the melody, and the left hand maintains the eighth-note accompaniment. Measure 17 is marked with a '17' at the beginning of the staff.

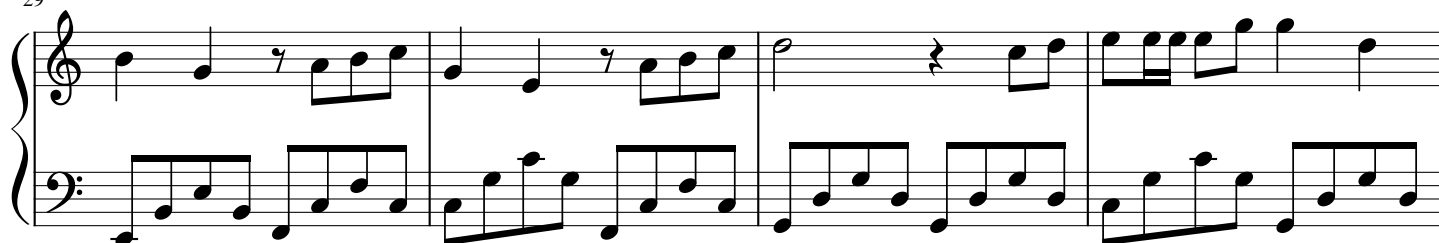
22



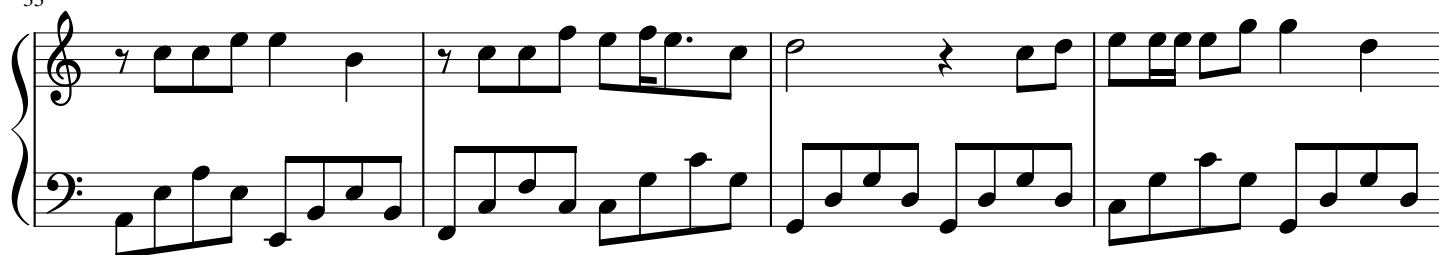
26



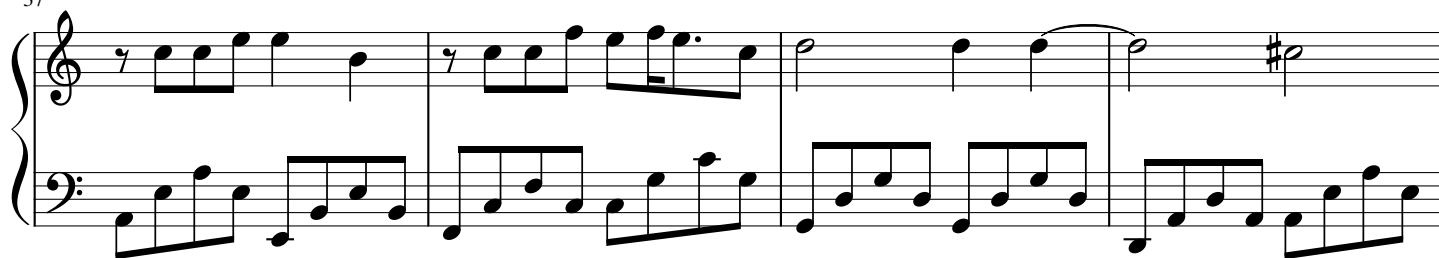
29



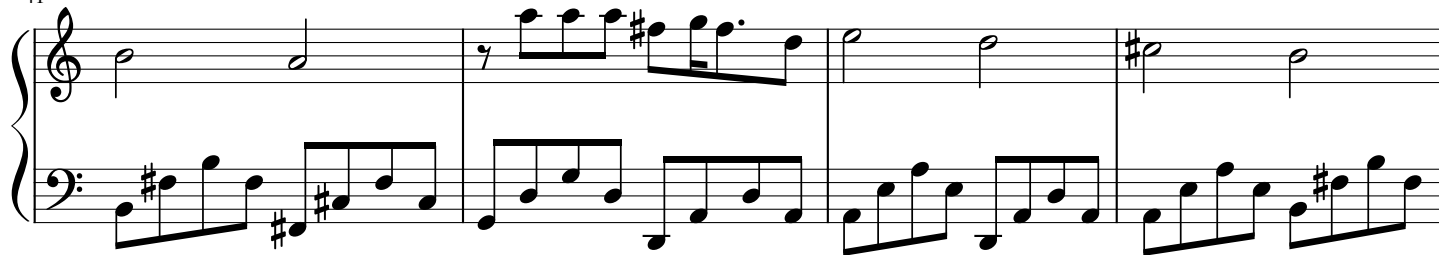
33



37



41



45

49

53

57

61

65